



LIFESTYLE COMMUNITY ROTATING BED

USER MANUAL



Thank you for choosing this
Lifestyle Community Rotating Bed.

This bed has been specifically designed to offer
comfort, support and safety.

**It is important that you read this user manual
carefully before using your new bed.**

TABLE OF CONTENTS

1. Symbols Used In This Manual	4
2. Symbols Used On The Product	5
3. Introduction	6
4. Safety Precautions	8
5. Specifications	10
6. Electronic Functions	11
7. Assembly	13
8. General Operation	18
9. Storage & Movement	18
10. Cleaning	19
11. Maintenance	21
12. Troubleshooting	22
13. Warranty & Service	26
14. Service Log Book	27



IMPORTANT: Do not use the bed without having first read this user manual

© Aidacare Limited 2025

No part of this user manual may be copied, distributed, reproduced, scanned or stored on any electronic database, whether in whole or in part in any form or by any means.

Due care has been taken to ensure all the information contained in this user manual is correct at the time of printing. All measurements, pictures, colours and weight capacities are to be used as a guide only. We reserve the right to modify the design or appearance of any product displayed in this user manual without prior notice.

1. SYMBOLS USED IN THIS MANUAL

The symbols below are used throughout this owner's manual and on the product to identify warnings and important information. It is very important for you to read them and understand them completely.



WARNING

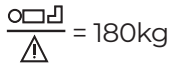
Indicates a potentially hazardous condition/situation. Failure to follow designated procedures can cause either personal injury, component damage or malfunction. On the product, this icon is represented as a black symbol on a white triangle with a black border.



ALWAYS! These actions should be performed as specified. Failure to perform mandatory actions can cause personal injury and/or equipment damage. On the product, this icon is represented as a white infinity symbol on a black dot with a white border.

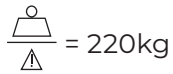


DO NOT! These actions are prohibited. These actions should not be performed at any time or in any circumstances. Performing a prohibited action can cause personal injury and/or equipment damage. On the product, this icon is represented as a white symbol with a black circle and black slash.



= 180kg

MAXIMUM PATIENT WEIGHT. This weight represents the total maximum weight of a patient on the bed. This weight (180kg) should not be exceeded at any time.



= 220kg

SAFE WORKING LOAD (SWL). This weight represents the total maximum weight that the bed can carry, including patient, mattress, bedding, bed ends and accessories. This weight (220kg) should not be exceeded at any time.



Please scan the QR code or visit our website aidacare.com.au and search 'Aidacare Rotating Bed' to access product marketing and technical documentation.

2. SYMBOLS USED ON THE PRODUCT



Sticker shown is not to scale.



Product Code



Caution



Serial Number



Medical Device



Manufacturer



Max Patient Weight



Importer



Safe Working Load



Country of Manufacture



Type B as per IEC60601-1



Includes Electronics components and should be mixed with General household waste



Class 1 Electrical Equipment



Read User Manual

3. INTRODUCTION

The Lifestyle Community Rotating Bed is a versatile medical bed designed to offer both comfort and functionality for patients who require extended care. This bed is particularly suitable for use in home care settings. With a range of electric profiling functions, including adjustable backrest, leg support, and height adjustments, the bed can also rotate and transition into a chair position which can lift and tilt forwards to assist users with standing and aid in patient mobility.

The bed's design prioritises safety, with features such as bed rails to prevent falls, a hand control system for easy adjustments, and swivel wheels for mobility. The user manual provides comprehensive guidance on assembly, operation, maintenance, and safety to ensure optimal use and longevity of the bed.

CLINICAL APPLICATIONS AND AREA OF USE

This bed is primarily designed for use in home care environments, nursing homes, assisted living facilities, rehabilitation centres, and hospice care settings. Its versatile functionality makes it ideal for patients requiring long-term care, post-operative recovery, geriatric care, and palliative care.

The bed's ability to transition from a lying position to a seated chair position, along with its various electric adjustments, supports patient mobility and comfort, making it an essential tool in settings where patient repositioning and safety are critical. While it is not intended for hospital use, it is highly effective in providing care in other clinical and residential settings where ease of use and patient well-being are priorities.

KEY FEATURES

- **Electric Height Adjustment:** Adjustable bed height from 34 to 73cm for ease of access and care.
- **Electric Backrest Adjustment:** Adjustable from 0° to 72° with Auto-Regression to enhance comfort and reduce shear.
- **Electric Leg Section Adjustment:** Adjustable from 0° to 33° (leg section) to provide various comfortable positions.
- **Rotating and Chair Conversion:** Bed can rotate and transform into a chair position to assist with patient transfer and mobility. From the chair position the bed can lift and tilt forwards to assist users with standing.
- **Swivel Wheels:** Four individually lockable swivel wheels for easy mobility and secure placement.
- **Drop-down Full Length Bed Rails:** Two-bar bed rails on both sides that can be lowered when not in use, providing patient safety.
- **Hand Control Units:** Two hand controls provided, one for adjusting height and tilt, and the other for controlling backrest, leg support, and rotating functions.
- **Maintenance-Free Actuators:** Powered by linear actuators that are maintenance-free with permanent lubrication and ingress protection to IP54 standard.
- **Durable Construction:** Bed frame made from steel tubing with a protective coating; head and foot panels are made of waterproof wood-like materials.
- **High Weight Capacity:** Supports up to 220kg with a maximum user weight of 180kg, accommodating a wide range of patients.

4. SAFETY PRECAUTIONS

This User Manual outlines the intended use of the Lifestyle Community Rotating Bed, the intended use constitutes how to achieve full functionality whilst maximizing safety and efficiency for care staff and patients alike.

It is **important** that this User Manual is read in its entirety prior to operating the bed. The manual is designed to ensure that users are equipped with the information required to competently and responsibly operate the bed and its accessories.

It is recommended that the User Manual be kept in an easily accessible place for quick reference. If required Aidacare product specialists can provide additional training.

All warnings and cautions within this manual should be strictly adhered to. Failure to do so could result in harm to the patient or operator.



WARNINGS highlighted throughout this document identify possible hazards in procedures or conditions which if not followed correctly could result in serious injury, or fatality.



CAUTIONS highlighted throughout this manual identify possible hazards in procedures or conditions, which if not followed correctly could result in equipment damage, or failure.

GENERAL

- Electrical equipment can be hazardous if used incorrectly
- Residual current devices (RCD) are not supplied with the beds. Please consult with your Biomedical Engineer/advisor concerning RCD requirements
- The clinically qualified person responsible should consider the age, size and condition of the patient before using the bed and its accessories
- The maximum safe working load of the Rotating Bed is 220kg and includes the mass of the patient, mattress and any accessories fitted to the bed. The maximum user weight is 180kg
- The bed should only be used with approved accessories. Contact **Aidacare** for a full list of approved accessories
- If a patient's condition could lead to a possible entrapment the mattress support platform should be left in the flat position whilst unattended



ALWAYS ensure all users are adequately trained on operating the bed, particularly on the electric and rotating functions



ALWAYS use bed rails to prevent accidental falls, and ensure they are securely locked in place



ALWAYS ensure the power cord and handset cord are positioned safely away from moving parts, ensuring it is not stretched, crushed, or damaged



ALWAYS perform regular visual and functional checks of both electrical and mechanical components, including the hand controls, bed frame, and bed rails



ALWAYS lock the wheels when the bed is in use to prevent unintended movement



ALWAYS disconnect the bed from the power supply before performing any maintenance or repairs



ALWAYS only use accessories supplied or approved by Aidacare to avoid voiding the warranty and risking safety



ALWAYS make sure that the patient is safely positioned to avoid entrapment before operating the bed



ALWAYS ensure that attendant and patient limbs are free from potential entrapment areas before operating any functions



ALWAYS apply the brakes when the bed is stationary



ALWAYS store the handset when not in use to avoid accidental operation of the beds functions. The handset can be stored by hooking it on to the side rail of the bed



DO NOT place the handset, or power cord across the mattress surface of the bed when the bed is not connected to mains power.

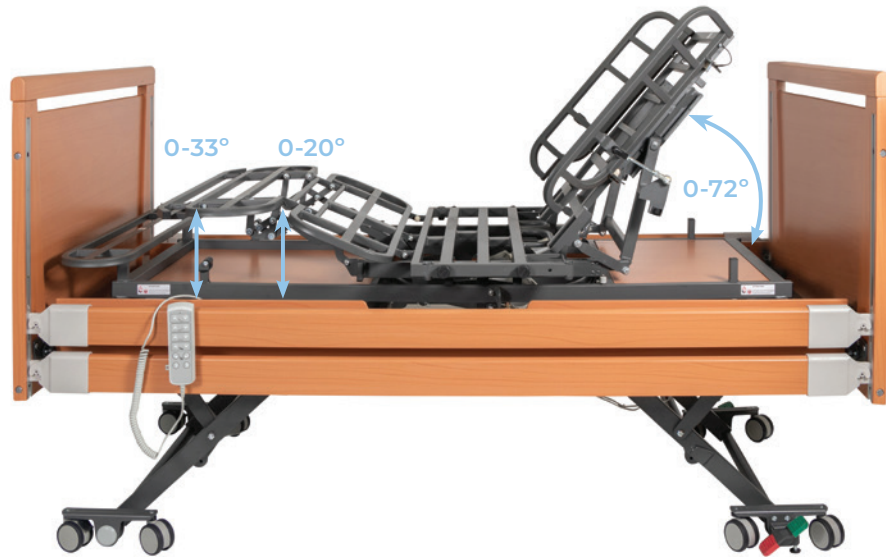


DO NOT use electrically operated beds in the presence of flammable gases



DO NOT use accessories that are not designed, or approved for use with Aspire Beds

5. SPECIFICATIONS



Specification

Overall Length	2100mm
Overall Width	1250mm
Mattress Base Length	2000mm
Mattress Base Width	885mm
Height Adjustment Range	345mm to 730mm
Backrest Angle Adjustment	0° to 72°
Leg Section Adjustment	0° to 33°(leg section), 0° to 20 °(knee section)
Rotating Angle	90° rotation
SWL	⚠ 220kg
Max User Weight	⚠ 180kg
Castors	8 x Castors
Actuators	Linear actuators with maintenance free lubrication
Ingress Protection Rating	IP54
Noise Level During Operation	Maximum 48 dB(A)
Power Supply	230V, 50 Hz

Electrical Parameters

Power Input	100-240V AC, 4000mA
Rate Load	Interruption 10%, Max 2 minutes ON / 18 minutes OFF
Leakage Protection	Class 1 Type B ⚡
Waterproof Grade	IP54

STANDARDS COMPLIANCE

The Lifestyle Community Rotating Bed, supplied by Aidacare, complies with a range of essential safety standards designed to ensure its reliability and safety in clinical and home care settings. The bed adheres to EN 60601-1, EN 60601-1-2, and IEC 60601-2-52. These standards collectively ensure the bed's electrical safety, durability, and user protection in care and home environments.

6. ELECTRONIC FUNCTIONS



WARNING

- Ensure the patient, caregivers and/or equipment is positioned to avoid being trapped or crushed during bed adjustment
- Ensure the power lead is not stretched excessively
- Ensure the handset and electrical leads cannot become entangled with moving parts of the bed
- DISCONNECT the power lead from the mains and stow before transporting the bed
- If the power lead shows any sign of damage, replace immediately
- Regularly inspect the power cord and hand control cables for signs of wear or damage

6.1 HANDSET OPERATION

Lifestyle Community Rotating Beds are powered by four electric IP54 rated actuators, which are controlled by the Handset. Adjustment occurs only while a button is pressed. Adjustment will stop when the button is released, or the selection reaches the end of its range.



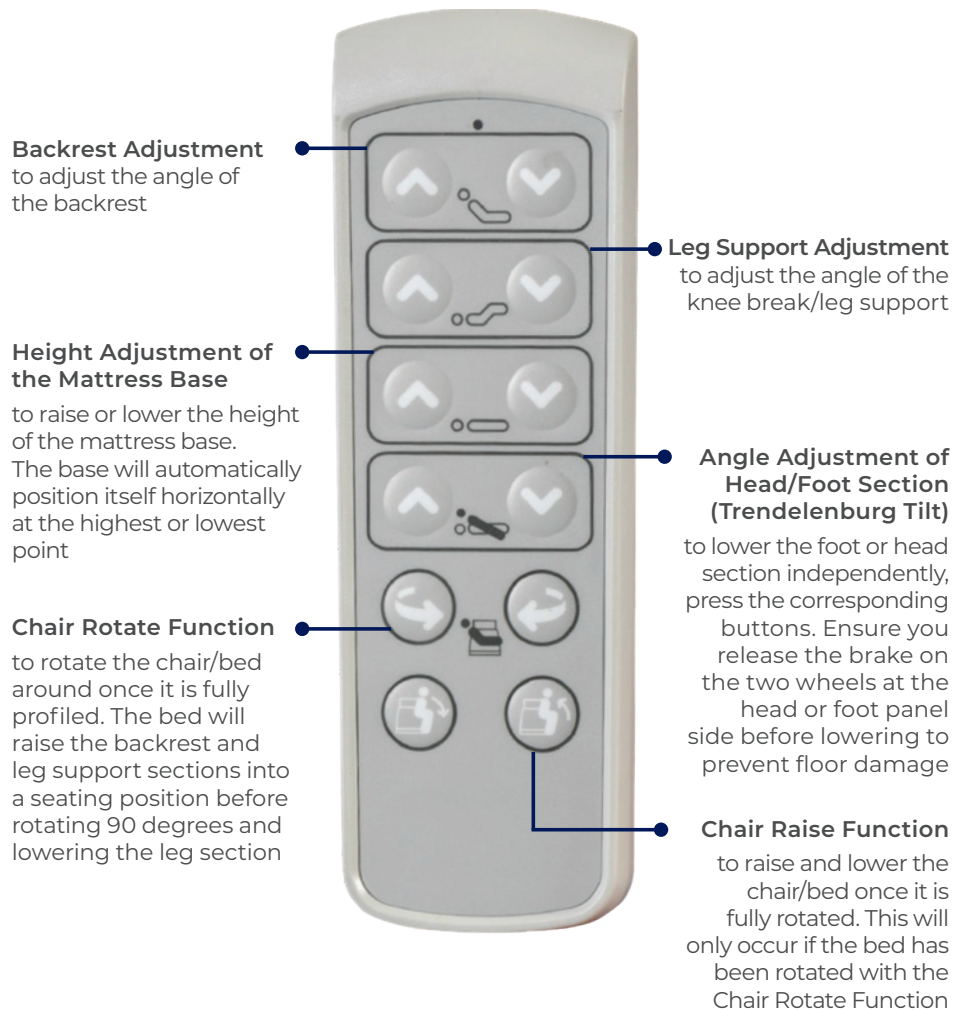
WARNING

WARNING! Care should be taken whilst operating the bed functions to ensure hands and fingers are free from potential squeeze hazards.



WARNING

WARNING! It is recommended that you pause and adjust the positioning of the bed while using the chair rotate the chair raise functions if needed. The backrest and leg rest angles while moving from seated to raised position may not be appropriate for all users.



7. ASSEMBLY

7.1 ASSEMBLY PRECAUTIONS

Two Person Assembly

Due to the size and weight of the components, it's recommended that at least two people assemble the bed to ensure safety and ease of handling.

Follow Instructions

Always refer to the specific assembly instructions provided in the user manual for precise steps and safety guidelines. This assembly process ensures that the Lifestyle Community Rotating Bed is properly constructed, providing a safe and comfortable environment for the patient.

7.2 ASSEMBLY OVERVIEW

Setting up Bed and Installing End Boards:

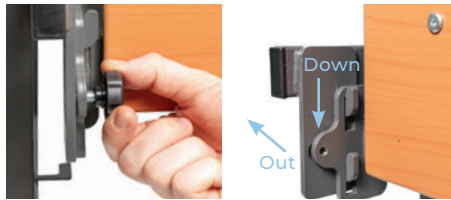
1. Check and make sure you have all components and that nothing is damaged.
2. Carefully cut the zip ties holding the self help pole and handset to the bed frame and set aside the self help pole components for later.
3. Remove the D-clip on each end of the bed holding it in the upright position.
4. Carefully rotate the bed to be level with the ground and replace the D-clips to lock it in this position.



5. Plug the bed into power then use the handset to lower the legs by pressing and holding the “Bed up” button until the bed movers are lifted off the ground slightly. Then unplug the bed.



6. Remove the bed movers by unscrewing the 4x hand bolts (2x at each end) then sliding the bed movers down and out of the slots. Note: You can leave the hand bolts screwed in you just need to loosen them.



7. Install the end boards simply by inserting them into the slots that the bed movers just came out of and retighten the hand bolts.



Installing Self Help Pole

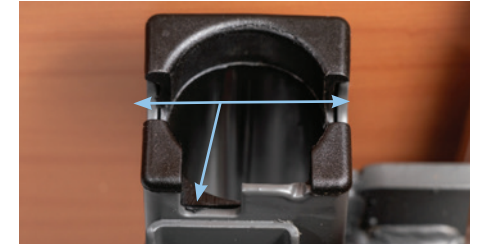
1. Make sure you have all three necessary components.
2. Connect the two halves of the pole together making sure the spring button clicks into place.



3. Insert the bottom of the self help pole into one of the two slots at the head end of the bed.
4. Finish the self help pole simply by looping the handle over the end, between the two handle retaining pins



5. There are three positions which the self help pole can safely be used in.



Installing Folding Side Rail

1. Remove the 4x hand bolts (2x each on left and right side).



2. Install the folding side rails onto the frame where you have just removed the hand bolts. Make sure the holes in the side rail line up with the holes in the frame.



3. Reinstall the 4x hand bolts to secure the folding side rail in place.



4. Operate the folding side rail by pressing the black button to unlock it and folding it up. Lock it down in place again by simply folding it downwards with a small amount of force.



Installing the Full Length Side Rails

1. Make sure you have all needed components. You should have 4x aluminium tubes and 4x pairs of end caps.

2. Install the pairs of end caps by inserting them onto the end of 2x aluminium tubes. Each end should look like the image shown



3. Once the full length side rails are fully assembled install them onto the bed simply by sliding them up the side rail slot on the bed ends. It may be easier to insert them if you are pressing and holding the release button on the bottom edge of the end board.



4. Once fully installed it should look like the image:



5. Operating the Full Length Side Rails:

- Raise the rails simply by grabbing the top rail and lifting until you hear a click from each end board. The click will indicate the rail has locked into the raised position.
- Lower the rail by pressing the release button at the top edge of each end board and slowly lowering the rail by hand.

NOTE: YOU CANNOT USE BOTH THE FULL LENGTH AND FOLDING SIDE RAILS AT THE SAME TIME. IF BOTH SIDE RAILS ARE INSTALLED THEN THE FULL LENGTH SIDE RAILS MUST REMAIN IN THE LOWERED POSITION AT ALL TIMES.

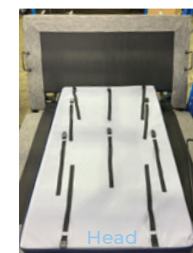
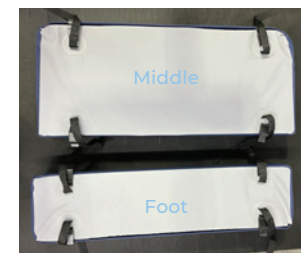


WARNING

Warning! The Full-Length Side Rails must be in the lowered position when using the rotating function of the bed.

Mattress Setup (BEM046300)

The mattress sections are fitted in order or largest to smallest from head end to foot end.



- Simply place the mattress section onto the correct part of the mattress deck. Each strap will line up with the part of the frame which it will need to be strapped to.
- For bedding it is recommended to use a flat sheet on top of the mattress which will need to be unhooked from the foot end mattress section when using the rotating function.



WARNING

Warning! The foot end mattress section **MUST** be strapped down so that the edge of the mattress is flush with the edge of the mattress deck frame section on which it is strapped as shown in the images.



Flush with frame section



WARNING

Warning! Make sure each strap is only attached to a frame section on the top layer of the mattress deck.



WARNING

Warning! Make sure every strap is used to attach the mattress to the bed.

8. GENERAL OPERATION

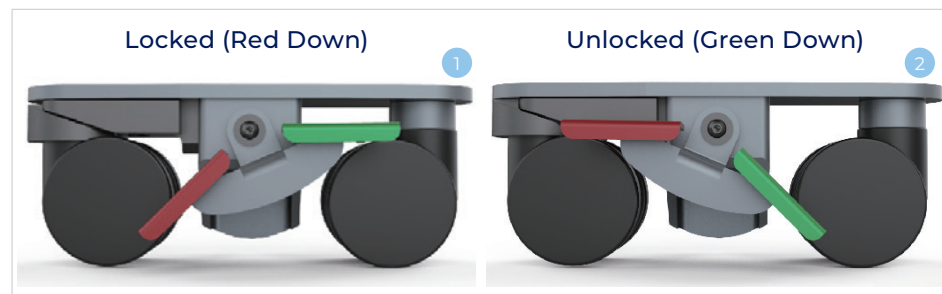
8.1 CASTOR SYSTEM – BRAKES & STEERING

8.1.1 Locking Castors

Central locking castors are located at the foot end of the bed. The brakes are interlinked on either side of the bed allowing operation with a single movement for improved safety and efficiency.

1. To engage the brakes push down on the red pedal as shown below until bed is locked in place
2. To disengage brakes push down on the green pedal until the brake system is completely unlocked

Pedal Positions



9. STORAGE & MOVEMENT

Clean the Bed

Thoroughly clean and disinfect the bed before storage, following the recommended cleaning procedures to remove any dirt, dust, or contaminants.

Lower the Bed or install transport trolleys

Lower the bed to its minimum height and ensure all moving parts, such as the backrest and leg rest, are in a flat position. If the bed is installed onto the transport trolleys then raise the legs and rotate the bed 90° to the vertical position.

Disconnect Power

Unplug the bed from the power outlet and secure the power cord to prevent damage.

Lock the Castors

Engage the locking mechanism on all castors to prevent the bed from moving during storage.

Protect the Bed

If possible, cover the bed with a protective sheet or cover to prevent dust accumulation and protect it from any accidental damage.

Store in a Dry Area

Store the bed in a cool, dry, and well-ventilated area to prevent moisture damage or rust. Avoid storing the bed in areas with extreme temperatures or high humidity.

Avoid Stacking

Do not place heavy items on top of the bed or stack other equipment on it to avoid damage to the frame or electronic components.

Check Periodically

If the bed is stored for an extended period, check it periodically to ensure it remains in good condition and free from dust or pests.

10. CLEANING

Cleaning Instructions for the Lifestyle Community Rotating Bed:

Disconnect Power

- Unplug the bed from the power outlet before cleaning to ensure safety.

Remove Bedding

- Take off all sheets, pillowcases, and any other bedding materials for separate laundering.

Surface Cleaning

- Wipe down all surfaces of the bed, including the mattress platform, bed rails, headboard, footboard, and hand controls, using a damp cloth with mild non-abrasive detergent.

Disinfection

- Use a hospital-grade disinfectant to clean all surfaces, paying special attention to high-touch areas such as the hand controls and bed rails.
- Follow the disinfectant manufacturer's instructions for dilution and contact time.

Mattress Cleaning

- If applicable, wipe the mattress with a damp cloth and mild detergent.
- Ensure the mattress is thoroughly dry before replacing the cover or using it again.

Wheels and Castors

- Clean the wheels and castors with a damp cloth.
- If necessary, disinfect them as well, especially if they have been exposed to contaminants.

Avoid Electrical Components

- Do not allow water or cleaning solutions to come into contact with the bed's electrical components, including the motor, control box, and any exposed wiring.
- Use a damp cloth to clean around these areas carefully.

Dry Thoroughly

- After cleaning, dry all surfaces with a clean, dry cloth to prevent moisture buildup, which could lead to rust or mold growth.

Reassemble and Reconnect

- Once the bed is completely dry, replace the bedding and reconnect the power supply.

Regular Cleaning

- Perform regular cleaning after each use or as needed, depending on the environment and the level of contamination.

11. MAINTENANCE

Regular Visual Inspection

- Inspect the bed regularly for any signs of wear or damage.
- Check the bed frame, mattress platform, bed rails, and all mechanical parts for cracks, bends, or other damage.
- Examine the electrical cables, hand controls, and connectors for fraying, loose connections, or any other visible damage.

Check the Functionality of the Bed

- Operate all the bed's electric functions, including height adjustment, backrest, leg rest, and rotation, to ensure they are working smoothly and without unusual noise.
- Test the hand controls to verify that each button responds correctly and that the bed functions as expected.

Inspect and Lubricate Moving Parts

- While the bed's actuators are maintenance-free, check other moving parts such as hinges and joints for smooth operation.
- Lubricate any mechanical joints or hinges that show signs of stiffness or squeaking, using a manufacturer-approved lubricant.

Check the Castors and Brakes

- Ensure all four castors move freely and that the brakes on each castor engage and disengage properly.
- Clean the castors to remove any debris that might impede movement or cause damage.

Battery Backup

- Check the battery condition regularly.
- Replace the battery according to the manufacturer's guidelines or if it shows signs of reduced performance.

Inspect Bed Rails and Safety Mechanisms

- Test the bed rails to ensure they lock securely in place when raised and that they move smoothly when lowered.
- Verify that all safety mechanisms are operational.

Electrical Safety Checks

- Perform routine electrical safety checks, ensuring that all connections are secure and that the bed operates without any electrical faults.
- If possible, have a qualified technician perform periodic electrical inspections, especially after any repairs or if the bed has been moved.

Cleaning and Disinfection

- Regularly clean and disinfect the bed according to the cleaning instructions. Ensure that all parts are dry before use.

Annual Professional Maintenance

- Schedule an annual maintenance check by a qualified technician. This check should include a thorough inspection of all mechanical and electrical components, testing of all safety features, and any necessary repairs or adjustments.

Replacement of Worn Parts

- Replace any worn or damaged parts immediately.
- Use only manufacturer-approved replacement parts to ensure the bed's safety and functionality.

Document Maintenance Activities

- Keep a record of all maintenance activities, including inspections, repairs, and part replacements.
- This documentation is important for warranty purposes and ensures the bed is kept in optimal condition.

12. TROUBLESHOOTING

IMPORTANT!

If the bed exhibits continuous electrical issues, motor malfunctions, or structural damage, discontinue use immediately and contact a qualified technician or Aidacare for professional service.

These troubleshooting steps should help resolve common issues with the Lifestyle Community Rotating Bed. Always follow the manufacturer's guidelines and safety instructions when attempting any troubleshooting or repairs.



WARNING

Disassemble the operating system only in the horizontal position to avoid the danger of being crushed by any elements falling from the mattress base. The drive components are maintenance free and cannot be opened. In case of malfunction, the component in question must be completely replaced.

Effect	Troubleshooting
Bed Does Not Respond to Hand Control	<p>Check Power Supply</p> <p>Ensure the bed is plugged into a functioning power outlet.</p> <p>Check that the power cord is securely connected to both the outlet and the bed's control unit.</p> <p>Verify that the outlet is providing power by testing it with another device.</p> <p>Inspect Hand Control</p> <p>Check the connection between the hand control and the control box. Ensure it is securely plugged in.</p> <p>Test the hand control by pressing different buttons to see if any functions respond.</p> <p>If no functions respond, the hand control may need to be replaced.</p>
Bed Movement is Jerky or Stops Suddenly	<p>Check for Obstructions</p> <p>Ensure there are no objects or obstructions under or around the bed that could interfere with its movement.</p> <p>Inspect Actuators</p> <p>Listen for unusual noises from the actuators (the motors that control bed movement).</p> <p>If they sound strained or are making unusual noises, they may need maintenance or replacement.</p> <p>Overload Protection</p> <p>If the bed stops moving during adjustment, it may have triggered an overload protection feature.</p> <p>Reduce the load on the bed and try operating it again after a short rest period.</p>

Effect	Troubleshooting
One Function Does Not Work (e.g., Backrest or Leg Rest)	<p>Inspect Hand Control and Connections Test the hand control to see if other functions work. If only one function is unresponsive, check the specific actuator connection for that function.</p> <p>Ensure the actuator's cable is securely connected to the control box.</p> <p>Check for Faulty Actuator If the actuator is properly connected and the function still does not work, the actuator may be faulty and require replacement</p>
Bed Moves in Only One Direction	<p>Check Hand Control Ensure that the hand control is not malfunctioning. Test the opposite direction button to see if the issue is isolated to one button.</p> <p>Inspect Cables Check the cable connections between the actuator and the control box. Reversed or loose cables can cause this issue.</p> <p>Replace Hand Control (if necessary) If the hand control is the issue, replacing it may resolve the problem.</p>
Bed Rails or Safety Features Not Locking Properly	<p>Check Locking Mechanisms Inspect the bed rails and other safety features to ensure that their locking mechanisms are free from debris and are functioning correctly.</p> <p>Lubricate Moving Parts Apply a small amount of lubricant to the moving parts of the bed rails or other safety mechanisms if they are stiff or difficult to operate.</p> <p>Replace Damaged Parts If the locking mechanism is damaged, replace the necessary components to restore proper functionality.</p>

Effect	Troubleshooting
Unusual Noises During Operation	<p>Inspect Bed Components Identify the source of the noise by operating the bed and listening for where the sound originates.</p> <p>Check for Loose Parts Tighten any loose screws, bolts, or connections that may be causing rattling or other noises.</p> <p>Lubricate Moving Parts Apply lubricant to any moving parts that may be causing squeaks or friction sounds.</p>
Bed Does Not Rotate or Transition to Chair Position	<p>Ensure Full Profiling Verify that the bed is fully profiled (backrest and leg sections are adjusted correctly) before attempting to rotate or transition to the chair position.</p> <p>Check Rotate and Tilt Actuators Inspect the connections and functionality of the rotate and tilt actuators. Ensure they are securely connected and not obstructed.</p> <p>Reset the System Perform a system reset by unplugging the bed, waiting for a few minutes, and then plugging it back in.</p>
Power Cord or Cable Damage	<p>Inspect Cables Regularly check all power cords and cables for signs of wear, fraying, or other damage.</p> <p>Replace Damaged Cables If any cables are damaged, they should be replaced immediately to prevent electrical hazards.</p>

13. WARRANTY & SERVICE

Aidacare FL250 Beds carry a comprehensive warranty as detailed below. Please keep proof of purchase for proof of warranty commencement.

10 YEARS WARRANTY
Frame

3 YEARS WARRANTY
Electronics

1 YEARS WARRANTY
Handsets & Cable

Consumer Warranty Against Defects

Aidacare is bound by Australian Consumer Law in respect to Warranty Against Defects. A copy of the Aidacare Warranty Against Defects statement is available on the **Aidacare homepage** at **aidacare.com.au**. All warranty matters should be directed to **Aidacare Customer Service** on **1300 133 120**.

Aidacare does not warrant against excessive or incorrect use, modification or any situation that could not be deemed as fair wear and tear. This is a back to base warranty and does not cover freight costs pertaining to the return of any items under warranty. Aidacare acknowledges and conforms to all ACCC guidelines around consumer rights. For further information contact **Aidacare** on **1300 133 120** or email **product@aidacare.com.au**.

Aidacare will not warrant the safety and or correct functioning of products where any original components have been changed or modified by non-Aidacare approved and trained service & maintenance staff or external providers. Furthermore, safety is not guaranteed where components have been replaced with non-original Aidacare approved parts. If any faults are detected upon receipt of this product please phone Aidacare. Any faults that are detected during normal use should be reported to Aidacare immediately to determine if warranty conditions apply and if so, the necessary repair or replacement work to be completed.

Spare parts list is available upon request.

For servicing, preventative maintenance and any other questions regarding this or any other Aidacare product please contact:

AIDACARE PTY LTD

Building 3A, 1 Moorebank Avenue,
Moorebank NSW 2170
Australia

1300 133 120 | aidacare.com.au

AIDACARE LIMITED

Arcadia House, Maritime Walk,
Ocean Village, Southampton SO14 3TL
United Kingdom

01622 541235 | aidacare.co.uk

14. SERVICE LOG BOOK

Year 1	Date: _____
Service Type: _____	
Condition Report: _____	
Inspected by: _____	Signature: _____
Action taken: _____	Date: _____

Year 2	Date: _____
Service Type: _____	
Condition Report: _____	
Inspected by: _____	Signature: _____
Action taken: _____	Date: _____

Year 3	Date: _____
Service Type: _____	
Condition Report: _____	
Inspected by: _____	Signature: _____
Action taken: _____	Date: _____

Year 4	Date: _____
Service Type: _____	
Condition Report: _____	
Inspected by: _____	Signature: _____
Action taken: _____	Date: _____

Year 5	Date: _____
Service Type: _____	
Condition Report: _____	
Inspected by: _____	Signature: _____
Action taken: _____	Date: _____

AIDACARE PTY LTD

Building 3A, 1 Moorebank Avenue,
Moorebank NSW 2170
Australia

1300 133 120 | aidacare.com.au

AIDACARE LIMITED

Arcadia House, Maritime Walk,
Ocean Village, Southampton SO14 3TL
United Kingdom

01622 541235 | aidacare.co.uk

MADE IN PRC