



**New!**

# GottaGo

Toilet Time Made Easy,  
Home and Away

Family Freedom

# firefly GottaGo

## Perfect for Families at Home and Away

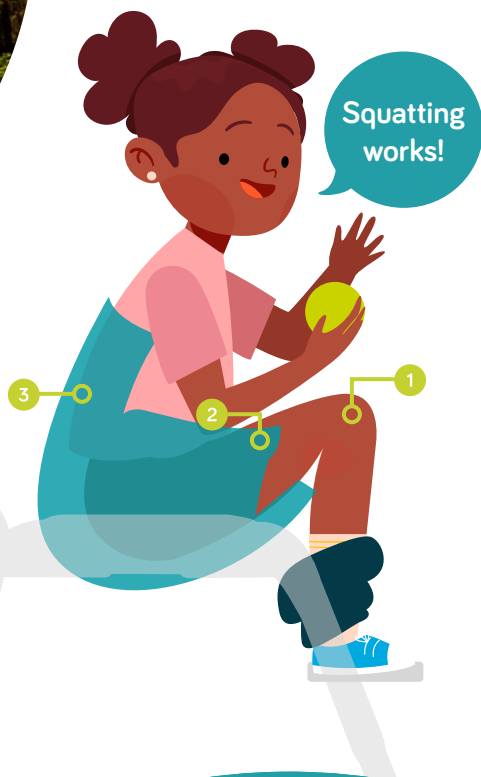
GottaGo is an innovative, compact, portable toilet seat which provides you with the consistency needed for toileting success.

Designed with active families in mind, we are lifting the limits on where you can go and for how long by providing a comfortable, stylish toilet seat which can be used both home and away.

Complete with a neat backpack for stress-free travel and a toilet training guide, the GottaGo is a toilet seat like no other - making toilet time easier for everyone.

- 1 Lightweight and sturdy
- 2 Can be used over any toilet or with a potty insert
- 3 Retractable legs for easy folding, stowing and different height settings
- 4 Snug hug-like fit and warm touch materials for extra comfort





## GottaGo's unique squat posture makes going to the toilet easier

The **GottaGo** is designed to hold your little one in a forward leaning deep squat position. This natural posture allows the muscles controlling their bladder and bowels to relax, making going to the toilet easier for your child.

- 1 Knees above hips, supported feet slightly behind knees
- 2 Support along thighs for improved pressure distribution and user comfort
- 3 Adjustable back and lateral supports to enhance squat posture and comfort for better functioning on the toilet

### Meet Wilson

“The **GottaGo** and its unique training guide have been transformational for Wilson – it brought us from nappies and laxatives to independence and freedom.”

Amy, Wilson's mum.

For more on Wilson's case story, visit our website.



# Time to Train

**GottaGo** comes with an exclusive **toilet training guide**, specially tailored by our experienced clinical team. Alongside the seat, the guide will support and motivate both you and your child on their way to toileting independence.



## Sizing Guide

**GottaGo** comes as standard with seat size of your choice, frame, potty insert and backpack.

### Seat Sizing

	Size 1	Size 2
<b>Age</b>	2-5 years	4-9 years
<b>Hip Width</b>	22.5cm	27 cm
<b>Minimum Seat depth*</b>	22 cm	29 cm
<b>Backrest incline angle (forward)</b>	8°	25°
<b>Thigh angle (off horizontal)</b>	40°	40°
<b>Backrest height</b>	24cm	36cm
<b>Weight (seat and frame)</b>	5.8 kg	6.1 kg

### Frame Sizing

<b>Frame folded size</b>	51 x 56 x 19 cm / 20 x 22 x 7.5in
<b>Frame floor footprint</b>	52 x 74.5cm/ 20.5 x 29.3 in (at max height)
<b>Maximum user weight</b>	30 kg
<b>Height (lowest part of the seat)</b>	1 – 30cm/11.8 in 2 – 46cm/18 in 3 – 53cm/ 20.9 in
<b>Height (lowest part of the seat)</b>	1 – 30cm/11.8 in 2 – 46cm/18 in 3 – 53cm/ 20.9 in

\*For boys sizing it is recommended to choose the larger size providing they meet the minimum seat depth measurement

Distributed By:



1300 133 120  
www.aidacare.com.au



LS931-01